

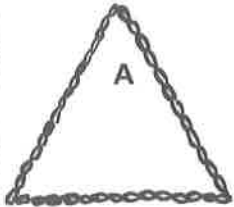
CHAINS



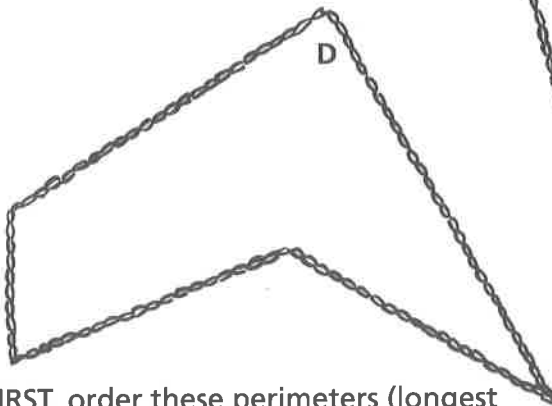
Name: _____

To find the perimeters of these chain shapes

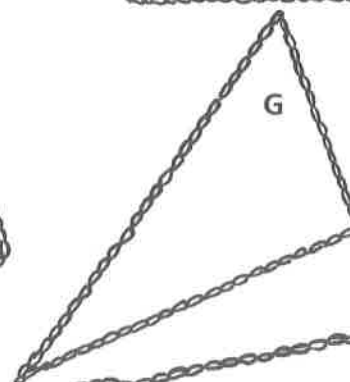
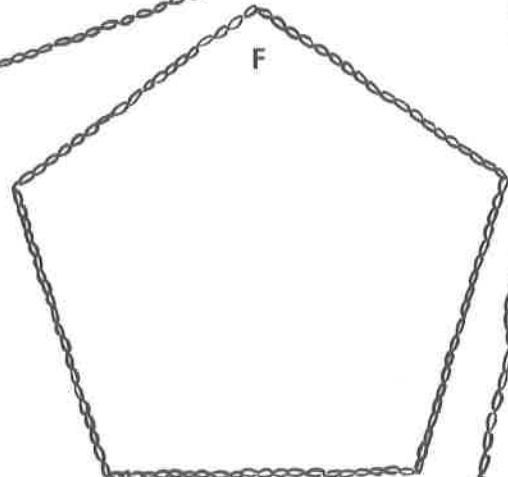
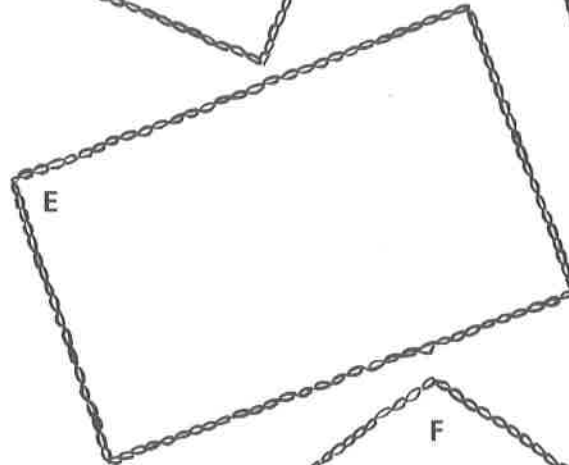
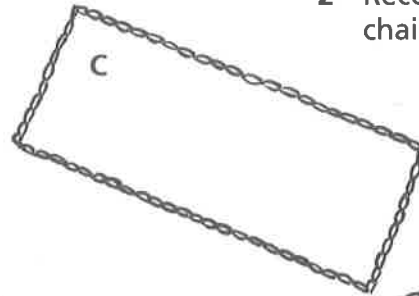
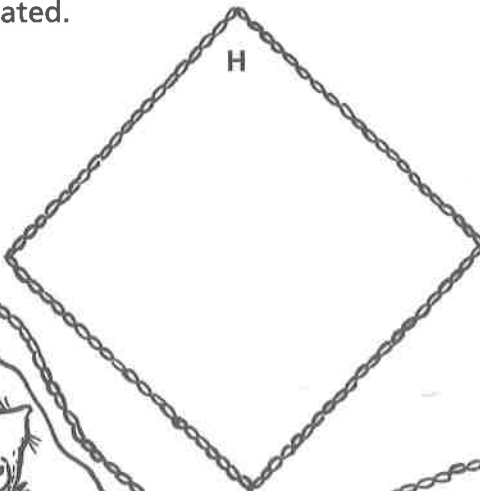
- 1 Measure the sides of shapes A to H. Write the lengths along the sides (to the nearest half-centimetre).



- 3 Measure and record the perimeter of shape I.

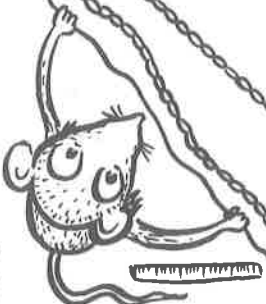


FIRST, order these perimeters (longest to shortest) just by looking. Then calculate them, to see how well you estimated.



- 2 Record the perimeters inside the chains.

I'm a 'chain' cheese eater.



Calculating perimeters, using formulae
TIB pp. 107–8, RLMB p. 53, SAB p. 46